

IDENTIFICATION

Automatic Overdrive Transmission (AOD) is identified by the code letter "T". The identification code letter is found on the lower line of Vehicle Certification Label under TR. This label is attached to driver's side door lock post.

The transmission model may be identified by a metal tag attached to transmission by the middle left hand extension housing retaining bolt. Top line of tag shows transmission model number and line shift code. Bottom line on tag shows the build date code. See **Fig. 1**.

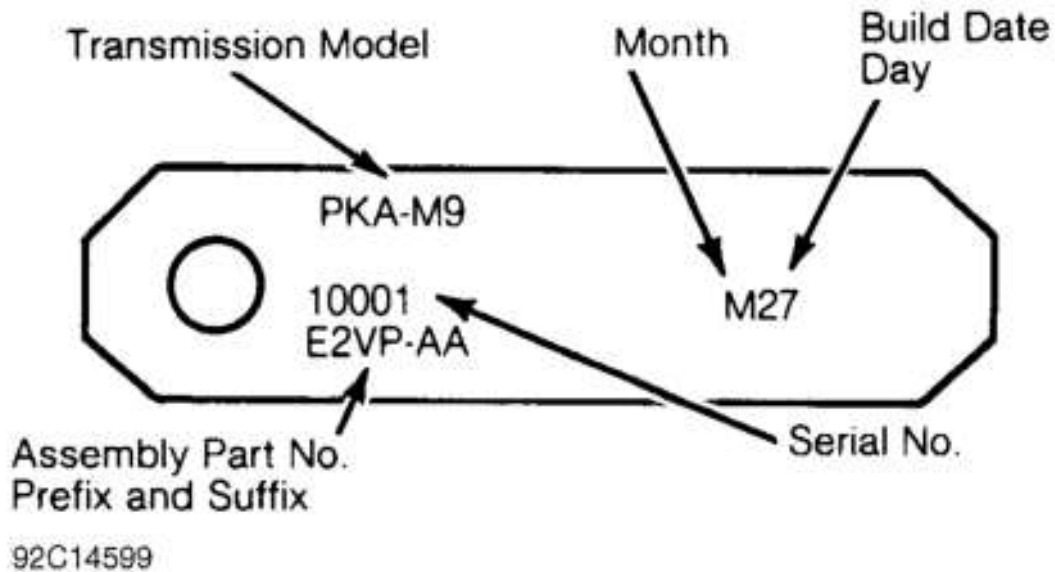


Fig. 1: Service Identification Tag
Courtesy of FORD MOTOR CO.