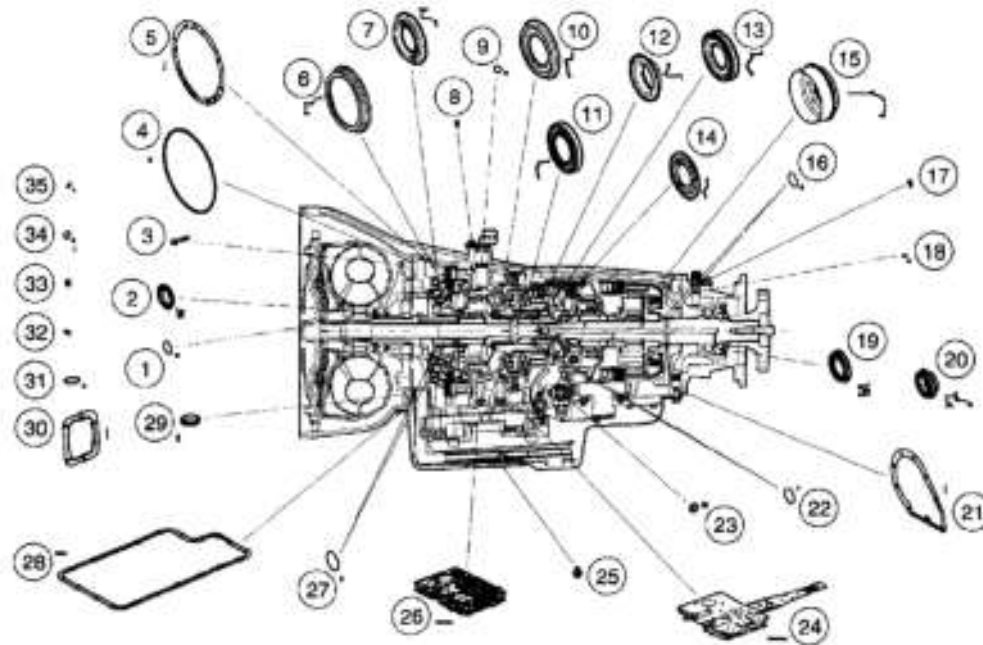


SEALS, RINGS & GASKET LOCATOR



Item	Part Number	Description
1	7L323	Stator support seal
2	7A248	Front pump support seal assembly
3	7N134	Pump-to-case bolts
4	7A248	Front pump seal-to-case
5	7A136	Front pump-to-case gasket
6	7A262	Overdrive clutch piston
7	7A262	Coast clutch piston
8	N805503-S100	Sensor-to-case retaining bolt
9	7Z101	Turbine shaft speed (TSS) and intermediate shaft speed sensor O-ring
10	7E005	Intermediate clutch piston
11	7G262	Direct clutch piston
12	7H359	Direct clutch balance piston
13	7G262	Forward clutch piston
14	7H360	Forward clutch balance piston
15	7D402	Reverse clutch piston
16	7D019	Case seal pack Teflon® seals

Item	Part Number	Description
17	N805503-S100	Sensor-to-case retaining bolt
18	7Z101	Output shaft speed (OSS) sensor O-ring
19	7052	Fixed yoke extension housing seal
20	7052	Slip yoke extension housing seal
21	7086	Extension housing-to-case gasket
22	7D019	Forward clutch piston Teflon® seals
23	7B498	Manual lever-to-case
24	7C155	Solenoid body to case gasket
25	6730	Transmission fluid pan drain plug
26	7H200	Manifold-to-ditch plate filter and gasket
27	7G402	Coast clutch Teflon® seals
28	7A191	Transmission fluid pan-to-case gasket
29	7Z302	Transmission fluid filter-to-case seal
30	7223	Power take off (PTO) cover gasket
31	7J149	Solenoid body bulkhead electrical connector
32	390685-S	Line pressure pipe plug
33	6026	Pipe plug
34	W708418-S300	Cooler line connector O-ring
35	391308-S	Fluid fill tube-to-stub seal

G01567713

Fig. 40: Seals, Rings and Gasket Locator

Courtesy of FORD MOTOR CO.