

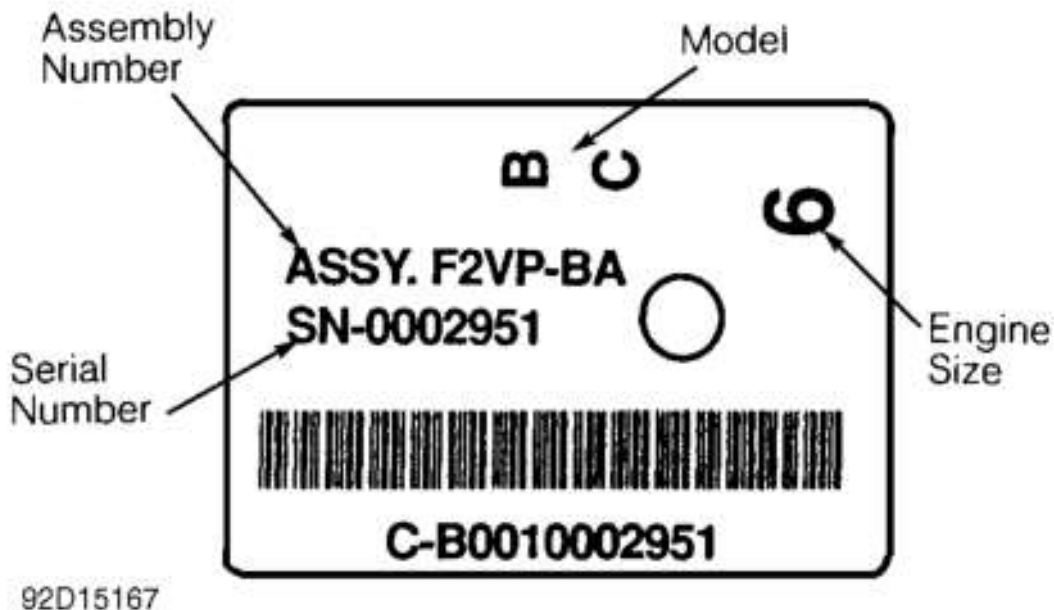
# IDENTIFICATION

4R70W is identified by code letter on lower line of Vehicle Certification Label under TR. Label is attached to driver's door lock post. See TRANSMISSION IDENTIFYING CODE LETTER TABLE .

Transmission model may be identified by service identification tag attached to right side of transmission case or fluid pan. Tag shows transmission model, assembly number, serial number and engine size. See Fig. 1 .

## TRANSMISSION IDENTIFYING CODE LETTER

Application	Letter Identification
1995	
Cougar, Thunderbird, Crown Victoria Grand Marquis & Town Car	U
Mark VIII	L
"E" & "F" Series	U
1996	
Cougar, Thunderbird	L
Crown Victoria, Grand Marquis Mustang & Town Car	U
Explorer, "E" & "F" Series	U
Mark VIII	U



**Fig. 1: Service Identification Tag**  
 Courtesy of FORD MOTOR CO.