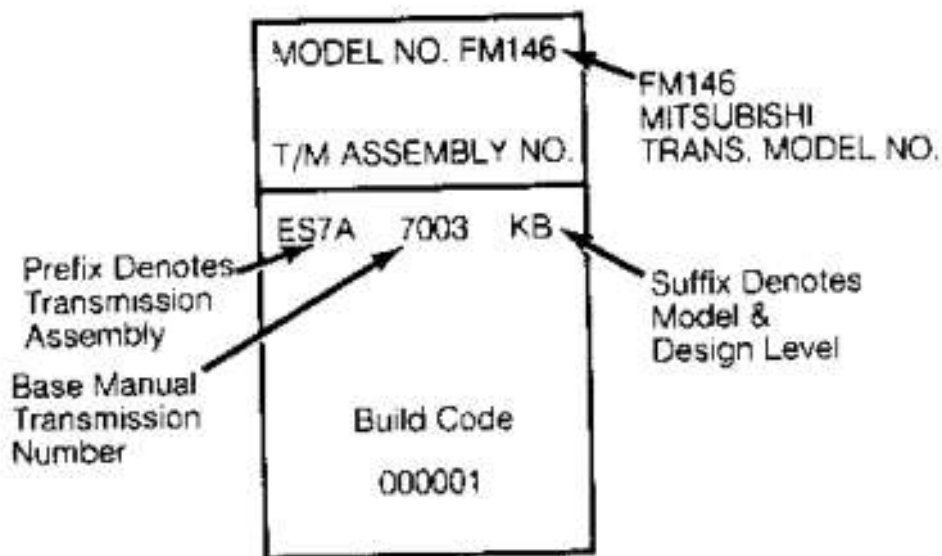


IDENTIFICATION

Ford vehicles built in the U.S.A. have a safety compliance label, located on driver's door lock pillar. Transmission code on label for manual 5-speed transmission is M/D.

Vehicles with 4WD have a service identification tag to identify transmission for servicing. Tag is located at right front side of transmission case. See Fig. 1 .



92J13895

Fig. 1: Transmission Service Identification Tag
Courtesy of FORD MOTOR CO.