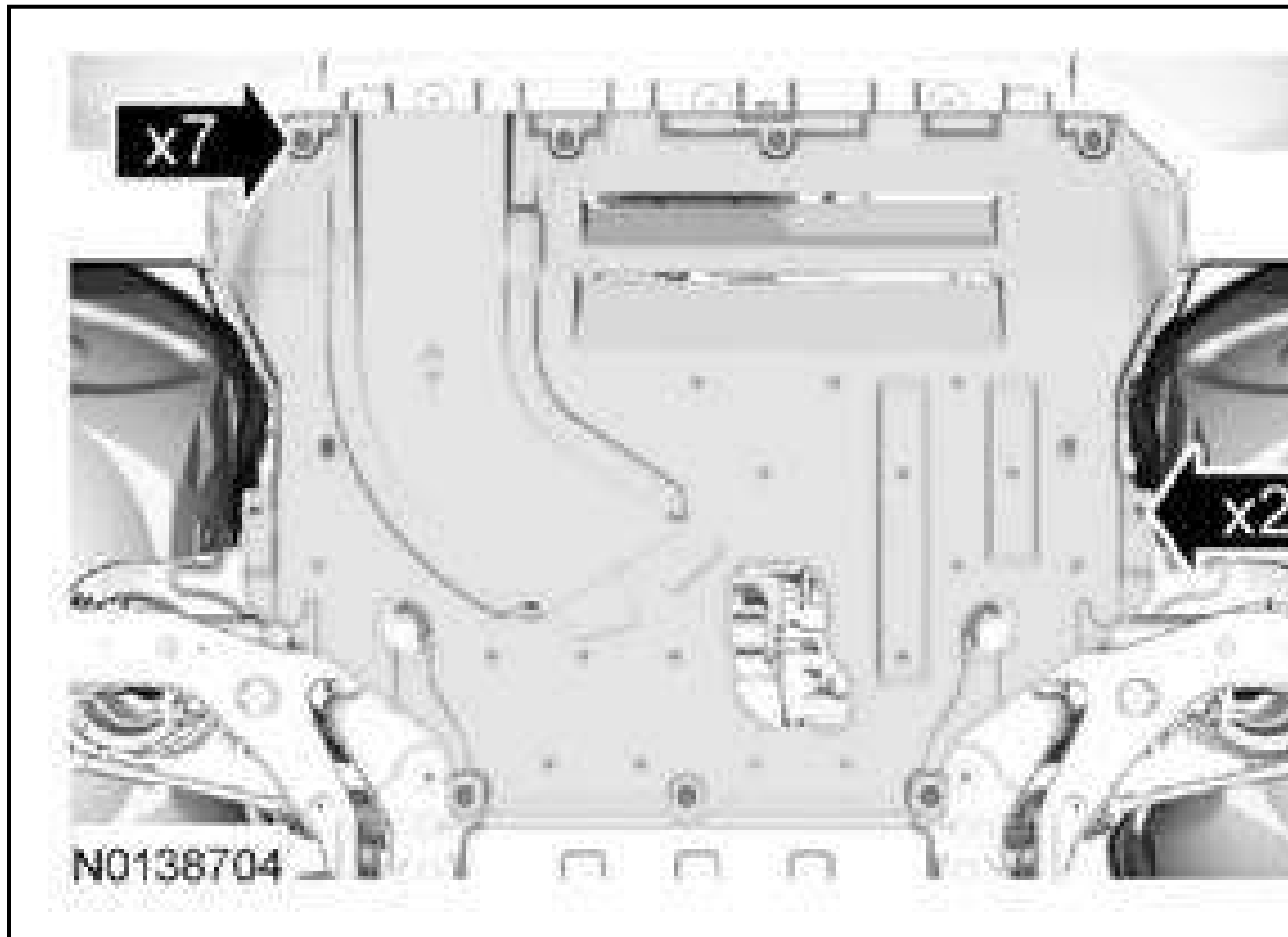


# GENERAL PROCEDURES

## VALVE CLEARANCE CHECK

General Equipment : Feeler Gauge

1. Remove the valve cover. Refer to VALVE COVER.
2. Remove the spark plugs. Refer to ENGINE IGNITION - 1.6L GTDI.



3.

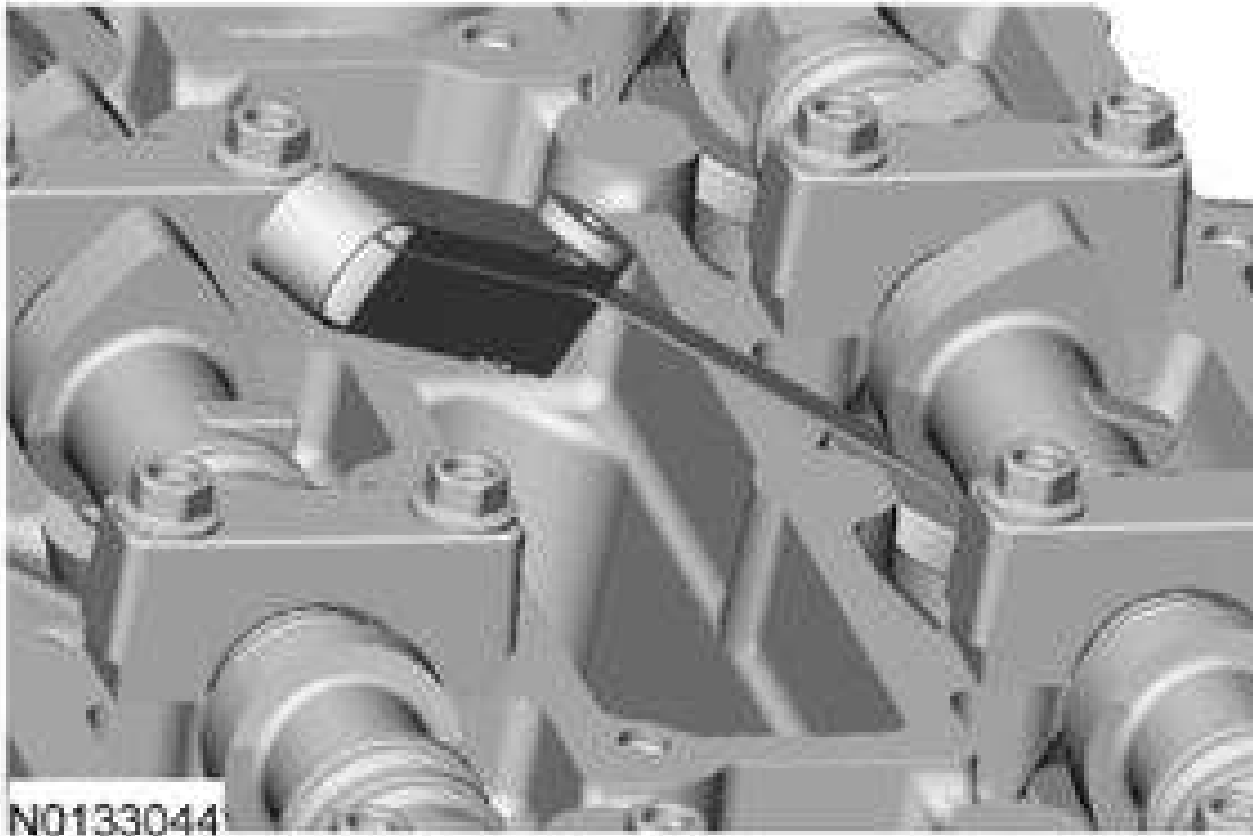
4. **NOTE:** Turn the engine clockwise only, and use the crankshaft bolt only.

**NOTE:** Measure each valve's clearance at base circle, with the lobe pointed away from the tappet.

General Equipment: Feeler Gauge.

Use a feeler gauge to measure each valve's clearance and record its location.

---



**NOTE:** The number on the valve tappet only reflects the digits that follow the decimal. For example, a tappet with the number 0.650 has the thickness of 3.650 mm.

5.

**NOTE:** The nominal clearance is 0.20 mm (0.0079 in) for intake and 0.34 mm (0.0133 in) for exhaust.

**NOTE:** The acceptable clearances after being fully installed is 0.17-0.23 mm (0.007-0.009 in) for intake and 0.31-0.37 mm (0.012-0.015 in) for exhaust.

Select tappets using this formula: tappet thickness = measured clearance + the existing tappet thickness - nominal clearance.

Select the closest tappet size to the ideal tappet thickness available and mark the installation location.

6. If any tappets do not measure within specifications, install new tappets in these locations. Refer to **VALVE TAPPETS**.