

ON-VEHICLE SERVICE

BACK-UP LIGHT SWITCH

Removal & Installation

Disconnect negative battery cable. Remove air cleaner. Remove 2 bolts retaining back-up light switch. Disconnect electrical lead to back-up light switch. To install, reverse removal procedure. Tighten bolts to specification. See TORQUE SPECIFICATIONS.

DIFFERENTIAL OIL SEALS

Removal & Installation

Remove axle shaft. See AXLE SHAFTS article in DRIVE AXLE section. Remove differential seal using a flat chisel. Install seal using appropriate seal replacer and driver handle.

SPEEDOMETER CABLE SLEEVE & DRIVEN GEAR

Removal & Installation

Remove air cleaner. Disconnect speedometer cable and electrical connector from Vehicle Speed Sensor (VSS). Remove roll pin, VSS and speedometer driven gear assembly. To install, reverse removal procedure.

DRIVE AXLE SHAFTS

See AXLE SHAFTS article in DRIVE AXLE section..

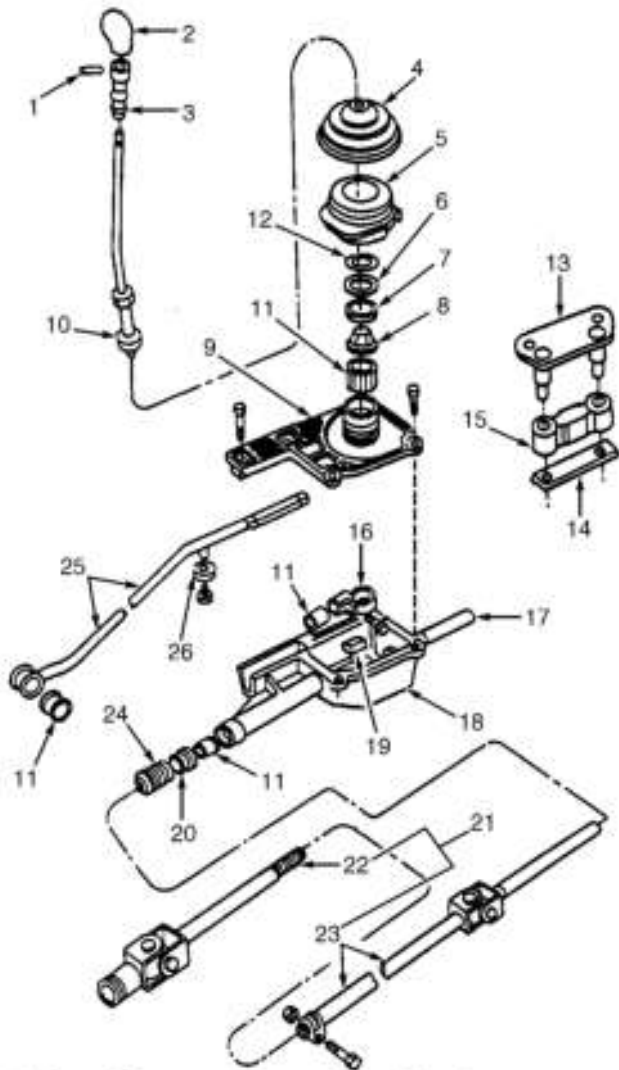
GEARSHIFT LEVER & LINKAGE

Removal

1. Remove knob by grasping firmly with both hands and pulling up. See **Fig. 1**. Slide console and boot assembly off gearshift lever. Remove gearshift lever insulator. Raise and support vehicle. Remove center underbody heat shield.
2. Remove shift rod clamp bolt. Pull transmission shift rod and clevis back to remove. Disconnect stabilizer rod from transaxle. Remove nuts securing gear selector housing to vehicle. Pull down and remove gear selector housing and gearshift lever assembly from vehicle.

Installation

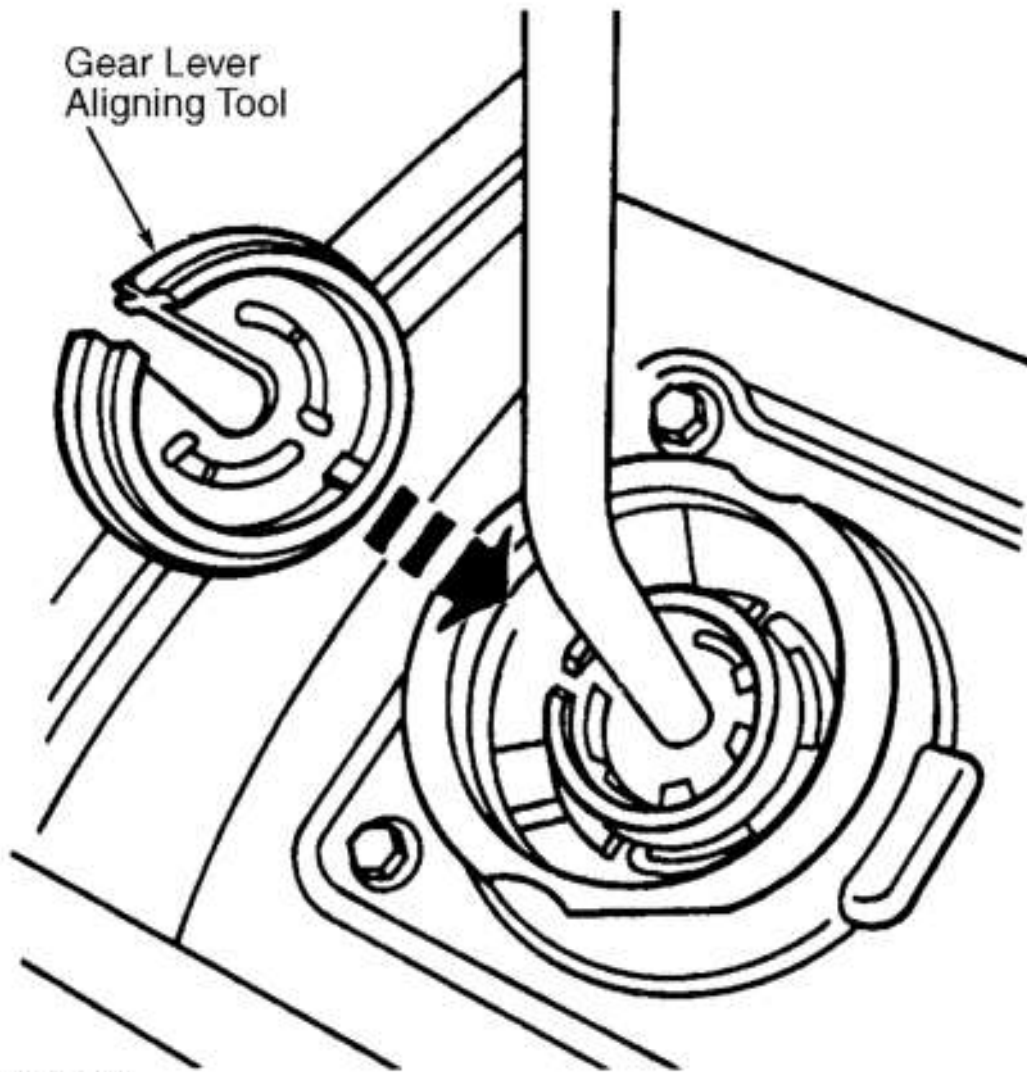
1. Lift gear selector housing and gearshift lever assembly into position. Install insulator lever to end of housing and engage bracket on floorboard. See **Fig. 1**. Install lower bracket and tighten retaining nuts to specification. See TORQUE SPECIFICATIONS. Attach stabilizer rod to transaxle.
2. Connect shift rod and loosely install clamp bolt. Ensure transaxle is in neutral. Install Gear Lever Aligning Tool (T94P-7025-FH) on gearshift lever. See **Fig. 2**. Rotate top of aligning tool clockwise. Tighten shift rod clamp bolt to specification. To complete installation, reverse removal procedure.



- | | |
|-----------------------------|--|
| 1. Groove Pin | 15. Insulator Lever |
| 2. Gearshift Lever Knob | 16. Control Bellcrank |
| 3. Actuator | 17. Reverse & 5th Relay
Lever Pivot Pin |
| 4. Gearshift Lever Boot | 18. Case Cover |
| 5. Insulator | 19. Stop |
| 6. Flatwasher | 20. Shift Shaft Seal |
| 7. Seal | 21. Shift Rod & Clevis |
| 8. Cup | 22. Gear Change Rod |
| 9. Control Selector Housing | 23. Shift Rod |
| 10. Gearshift Lever | 24. Shift Control Shaft Boot |
| 11. Bushing | 25. Stabilizer Bar |
| 12. Circlip | 26. Damper Assembly |
| 13. Bracket Assembly | |
| 14. Bracket | |

96104554

Fig. 1: Viewing External Shift Linkage
 Courtesy of FORD MOTOR CO.



96B04555

Fig. 2: Installing Gear Lever Aligning Tool
Courtesy of FORD MOTOR CO.