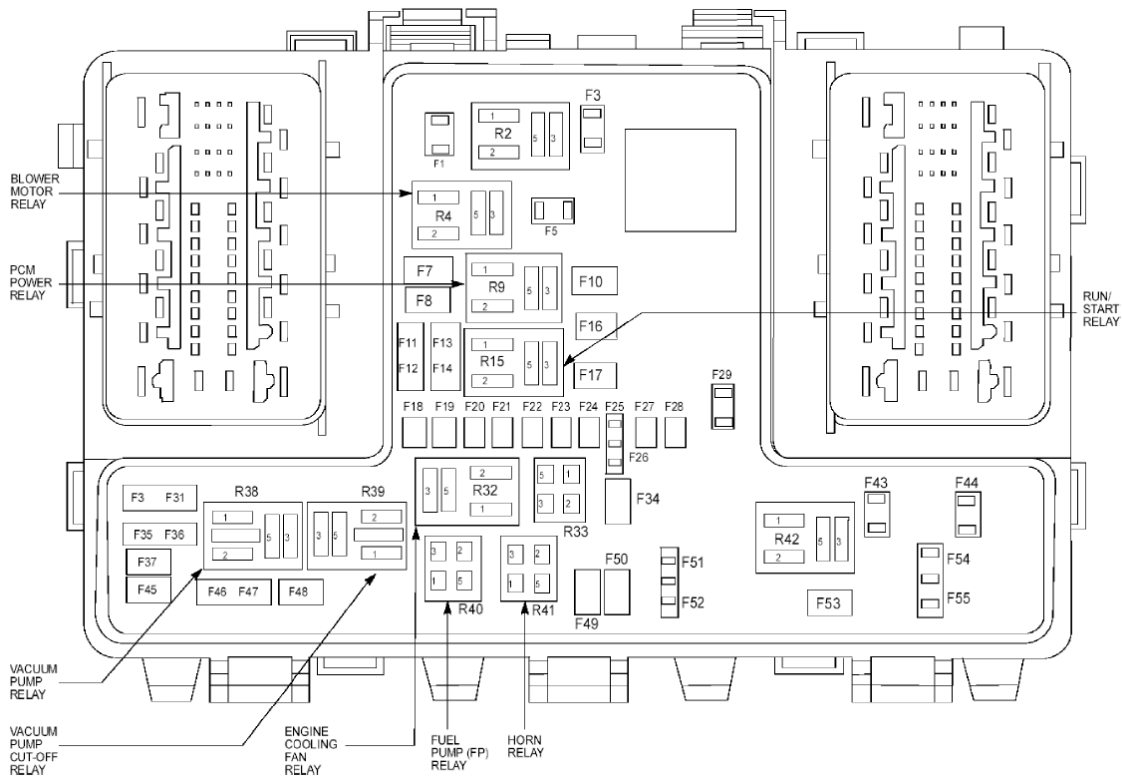


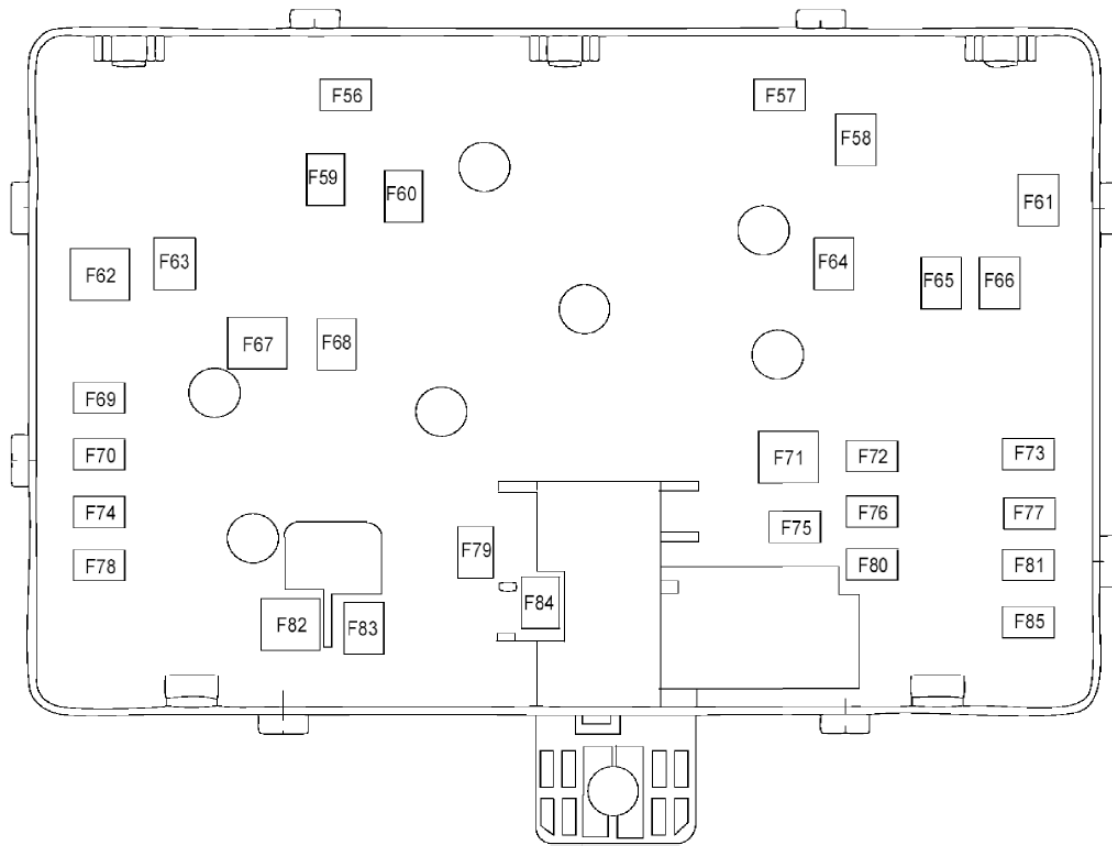
# FUSE AND RELAY INFORMATION

## BATTERY JUNCTION BOX (BJB) (TOP VIEW)



**Fig. 1: Identifying Battery Junction Box (Top View)**  
Courtesy of FORD MOTOR CO.

## BATTERY JUNCTION BOX (BJB) (BOTTOM VIEW)



**Fig. 2: Identifying Battery Junction Box (Bottom View)**  
 Courtesy of FORD MOTOR CO.

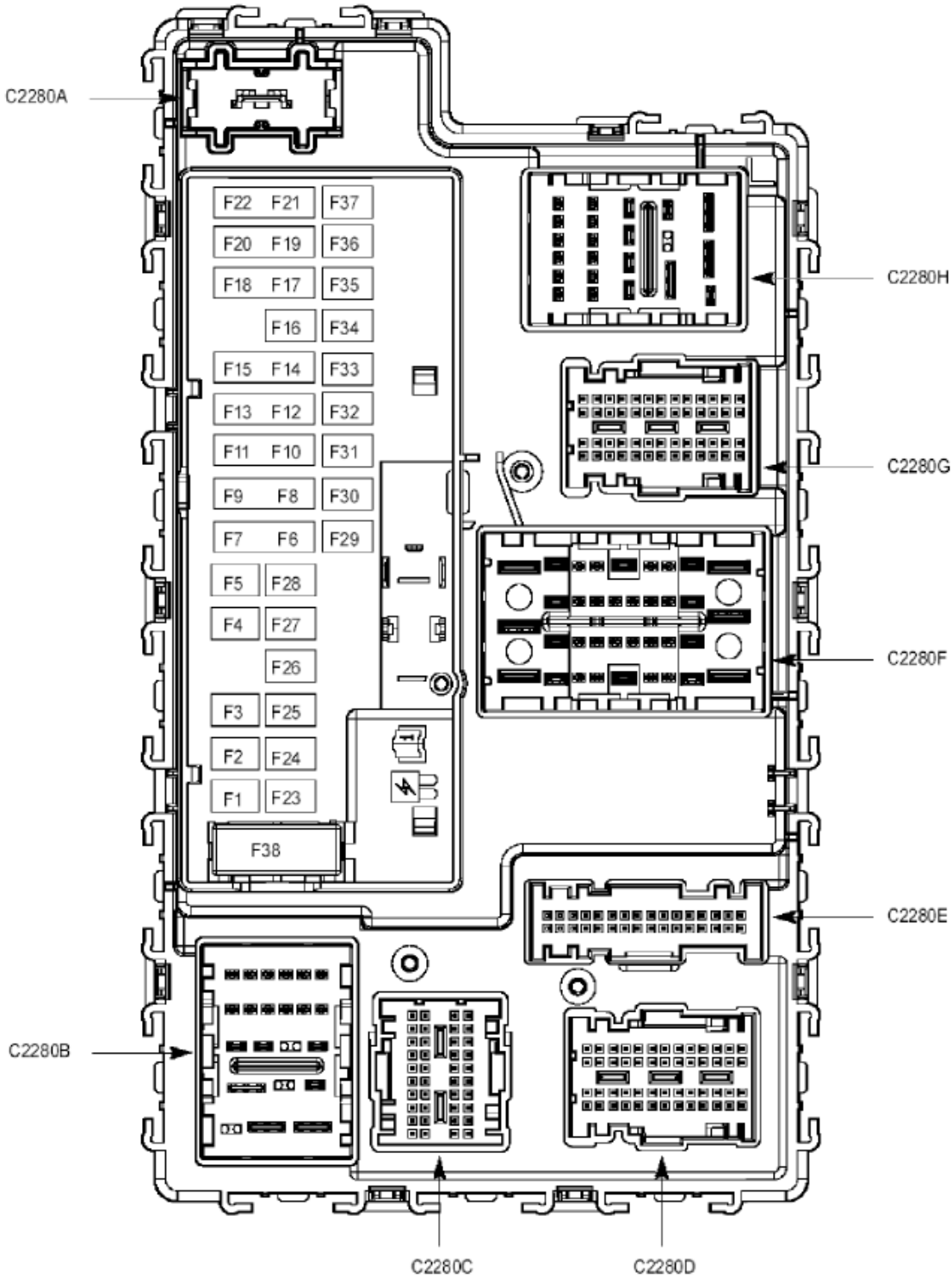
**BATTERY JUNCTION BOX (BJB)**

Fuse	Amps	Circuits protected
F1	25	Windshield wiper motor, right front
F3	15	Rain sensor module
F5	20	Rear passenger power outlet socket
F7	20	Powertrain Control Module (PCM)
F8	20	Mass Airflow/Intake Air Temperature (MAF/IAT) sensor, EVAP leak detection control module, Evaporative Emission (EVAP) purge valve, Heater core shutoff, EVAP vapor blocking valve, Fuel tank isolation valve, Heated Oxygen Sensors (HO2S), Variable Camshaft Timing 11 (VCT 11) solenoid, EGR stepper motor
F10	20	Cigar lighter
F11	15	Coil On Plugs (COPs), Ignition transformer capacitor
F12	15	Grille shutter actuator, Electric coolant pump, Cabin heater coolant pump
F13	10	Not used
F14	10	Not used
F16	20	Front power outlet socket
F17	20	Transmission fluid pump
F18	10	Powertrain Control Module (PCM), Secondary on board diagnostic module (SOBDMC)/Transmission Control Module (TCM)
F19	10	Power Steering Control Module (PSCM)
F20	10	Headlamp assembly LH, Headlamp assembly RH

F21	15	Secondary on board diagnostic module C (SOBDMC)/Transmission Control Module (TCM)
F23	15	Transmission Range Control Module (TRCM), Proximity warning radar unit, Head Up Display (HUD) module, Rear parking aid camera Side Obstacle Detection Control Module - Right (SOD-R), Side Obstacle Detection Control Module - Left (SOD-L)
F24	10	Transmission fluid pump
F25	10	Anti-lock Brake System (ABS) module
F26	10	Powertrain Control Module (PCM)
F27	10	Fuel door release relay
F29	15	Battery Charger Control Module (BCCM), High voltage battery cooling fan
F35	15	High voltage battery charger cooling fan
F36	15	High voltage battery cooling fan
F37	5	Not used
F45	5	Anti-lock Brake System (ABS) module
F47	10	Stoplamp switch
F48	20	Left horn, Right horn
F51	15	Secondary on board diagnostic module C (SOBDMC)/Transmission Control Module (TCM)
F52	15	Battery Energy Control Module (BECM)
F53	10	Multi contour seat relay
F54	10	Motor Electronics Coolant System Pump (MECSP)
F55	10	Air Conditioning Control Module (ACCM), In-vehicle temperature and humidity sensor, Cabin coolant heater
F56	30	Fuel pump control module, Fuel injectors
F59	40	Vacuum pump cut-off relay, Vacuum pump relay
F60	30	Engine cooling fan relay
F62	50	Body Control Module (BCM)
F63	20	Not used
F64	40	Battery Charger Control Module (BCCM)
F65	20	Front Controls Interface Module (FCIM)
F67	50	Body Control Module (BCM)
F68	40	Rear window defrost relay
F69	30	Anti-lock Brake System (ABS) module
F70	30	Passenger side front seat control switch
F72	30	Panoramic roof opening panel shield motor, Panoramic roof opening panel primary motor
F73	20	Heated seat module, rear
F74	30	Driver Seat Module (DSM), Driver side front seat control switch
F76	20	Transmission Range Control Module (TRCM)
F77	30	Dual Climate Controlled Seat Module (DCSM)
F78	40	Not used
F79	40	Blower motor relay
F80	30	Power striker module, Rear Gate Trunk Module (RGTM)
F81	40	Direct Current/Alternating Current (DC/AC) inverter
F82	60	Anti-lock Brake System (ABS) module
F83	25	Windshield wiper motor, left front

F84	30	Not used
F85	30	Panoramic roof opening panel secondary motor

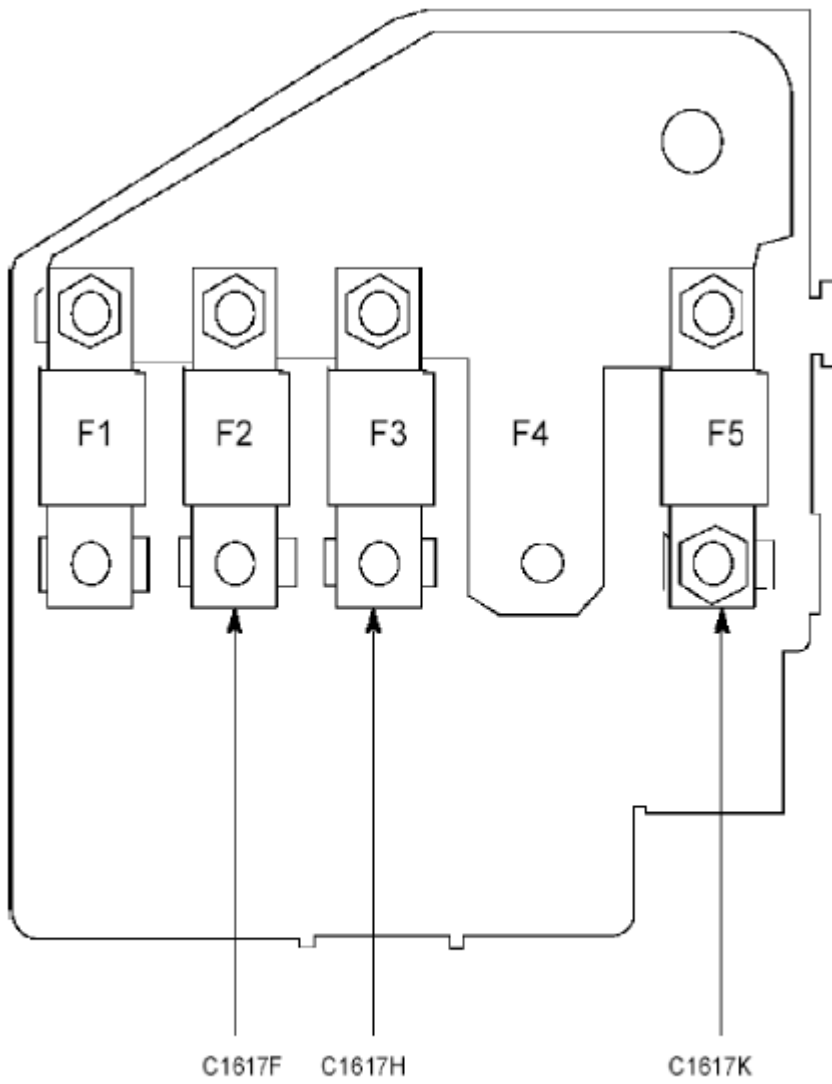
**BODY CONTROL MODULE (BCM)**



**Fig. 3: Identifying Body Control Module**  
 Courtesy of FORD MOTOR CO.

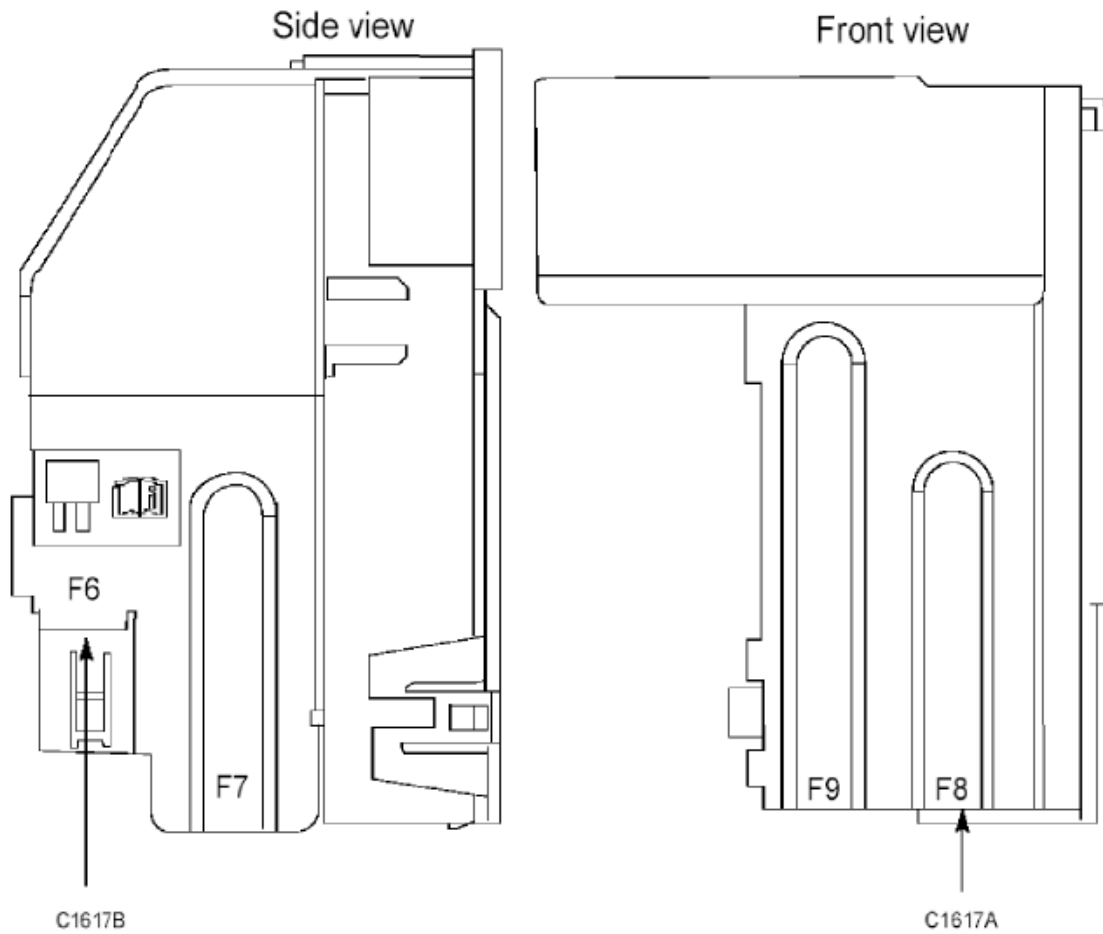
<b>Fuse</b>	<b>Amps</b>	<b>Circuits protected</b>
F1	10	Interior lighting
F2	7.5	Driver Seat Module (DSM), Driver side front seat control switch
F3	20	Front door latch release motor LH
F5	20	Subwoofer amplifier, Audio Digital Signal Processing (DSP) module
F10	5	Keyless entry keypad, Rear Gate Trunk Module (RGTM), Telematic Control Unit module (TCU)
F12	7.5	Front Controls Interface Module (FCIM), Gear Shift Module (GSM)
F13	7.5	Gateway module, Steering Column Control Module (SCCM), Instrument Panel Cluster (IPC)
F14	10	Battery Energy Control Module (BECM)
F15	10	Gateway module
F16	15	Luggage compartment lid latch
F17	5	Global Positioning System Module (GPSM) - Brazil
F18	5	Ignition switch, Ignition switch-push button start
F19	5	Passenger Airbag Deactivation (PAD) switch, Selector lever assembly
F20	5	Headlamp control module
F21	5	In-vehicle temperature and humidity sensor, Rear heated seat module
F22	5	Occupant Classification System Module (OCSM)
F24	30	Door latch release motors
F25	30	Driver Door Module (DDM)
F26	30	Passenger Door Module (PDM)
F27	30	Roof opening panel module
F28	20	Audio Digital Signal Processing (DSP) module
F29	30	Rear Door Module (RDM) LH
F30	30	Rear Door Module (RDM) RH
F31	10	Roof opening panel module, Panoramic roof opening panel primary motor, Direct Current/Alternating Current (DC/AC) inverter
F32	10	Global Positioning System Module (GPSM), Accessory Protocol Interface Module (APIM), Front Control/Display Interface Module (FCDIM), Proximity warning radar unit, Radio Transceiver Module (RTM)
F33	20	Digital Audio Control Module C (DACMC), Audio front Control Module (ACM), Compact disc player
F34	30	Run/Start Relay
F35	5	Restraints Control Module (RCM)
F36	15	Vehicle Dynamics Module (VDM), Auto-dimming interior mirror
F37	15	All Wheel Drive (AWD) relay module, Heated steering wheel module
F38	30	Rear window blind module

## **HIGH CURRENT BATTERY JUNCTION BOX (BJB)**



12A581 (Under BJB)

**Fig. 4: Identifying High Current Battery Junction Box (1 Of 2)**  
Courtesy of FORD MOTOR CO.



3C221 - (in Front of BJB)

**Fig. 5: Identifying High Current Battery Junction Box (2 Of 2)**  
 Courtesy of FORD MOTOR CO.

Fuse	Amps	Circuits protected
MEGA 1	-	Not used
MEGA 2	125	Body Control Module (BCM)
MEGA 3	50	Body Control Module (BCM)
MEGA 4	-	Not used
MEGA 5	50	Electric motor coolant pump
MEGA 6	70	Power Steering Control Module (PSCM)
MEGA 7	-	Not used
MEGA 8	175	DC/DC converter module
MEGA 9	-	Not used