

IDENTIFICATION

Transaxle can be identified by vehicle certification label located above latch on driver-side door pillar. Transaxle code is listed in sixth position under the "TR" heading. See **Fig. 1** . Code number for the IB5 transaxle is "5".

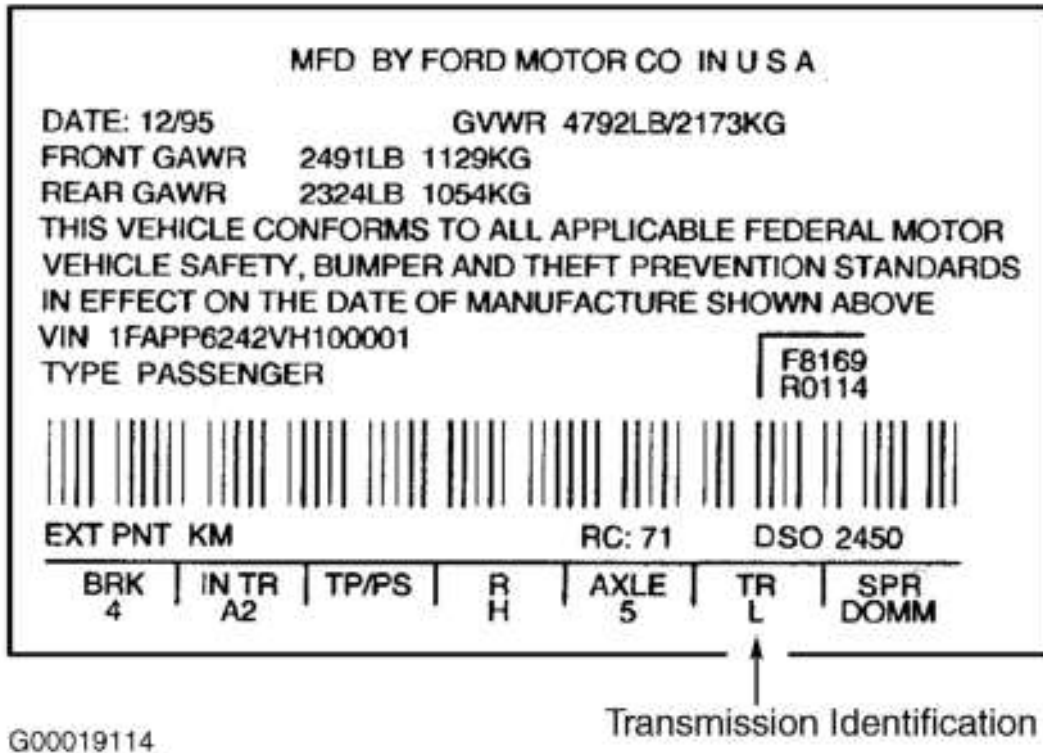


Fig. 1: Identifying Vehicle Certification Label
 Courtesy of FORD MOTOR CO.

GEAR RATIOS

TRANSAXLE GEAR RATIOS

Gear Range	Gear Ratio
1st	3.154:1
2nd	1.926:1
3rd	1.281:1
4th	0.951:1
5th	0.756:1
Reverse	3.615:1
Final Drive	3.610:1